

Which cap analog is the best fit for you?

CAP3011

m7G(5')ppp(5')(2'OMeA)pG

CAP5011 (ENE)

m7G(5')vppp(5')(2'OMeA)pG

CAP2811 (3'OMe)

m7(3'OMeG)(5')vppp(5')(2'-OMeA)pG

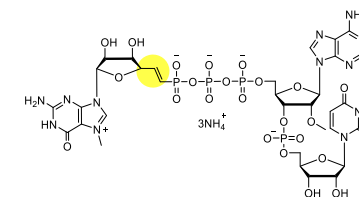
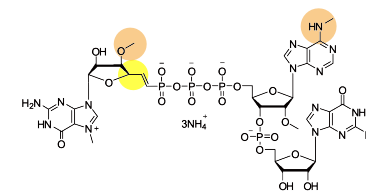
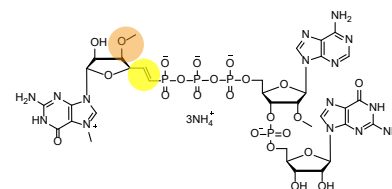
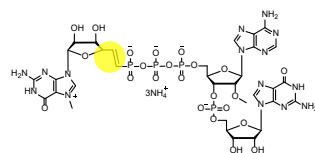
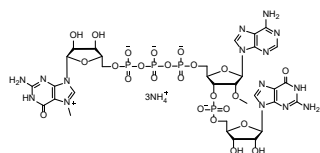
CAP3411 (m6A)

m7(3'OMeG)(5')vppp(5')(2'-OMe,m6A)pG

CAP1811 (GAU)

m7G(5')vppp(5')(2'OMeA)pU

Structure



Template Start

AG

AG

AG

AG

AU

Cap Innovation

m7GpppmApG.

Vinylphosphonic acid modification (ENE) of linkage between m7G cap and 1st ribonucleic acid.

CAP5011 with 3'OMe modification on m7G.

CAP5011 with m6A modification on Base A and 3'OMe modification on m7G.

CAP5011 with AU start instead of AG.

Application

mRNA

mRNA

mRNA

mRNA

saRNA

*Note: All displayed cap analogs result in Cap1 structure.

License-free. Available in RUO and GMP-grade.