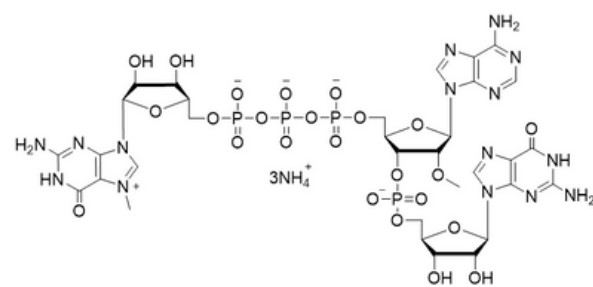


Cap Discovery Set Chemical Structures

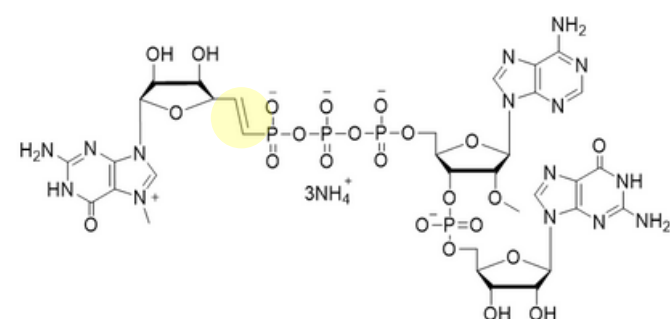
Cat. No. **CAP3011**

m7G(5')ppp(5')(2'OMeA)pG



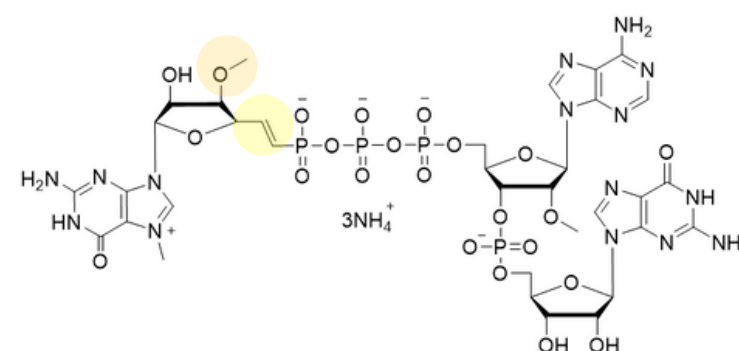
Cat. No. **CAP5011**

m7G(5')vppp(5')(2'OMeA)pG



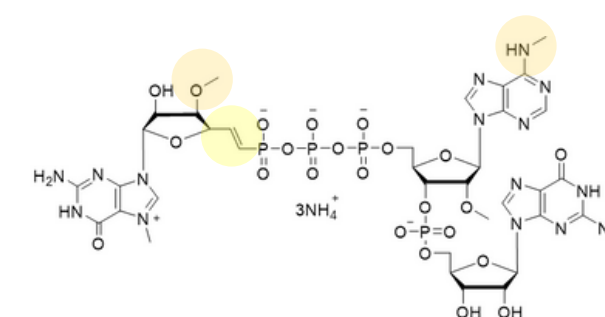
Cat. No. **CAP2811**

m7(3'OMeG)(5')vppp(5')(2'-OMeA)pG



Cat. No. **CAP3411**

m7(3'OMeG)(5')vppp(5')(2'-OMe,m6A)pG



Cat. No. **CAP3311**

A(5')ppp(5')(2'-OMeA)pG

